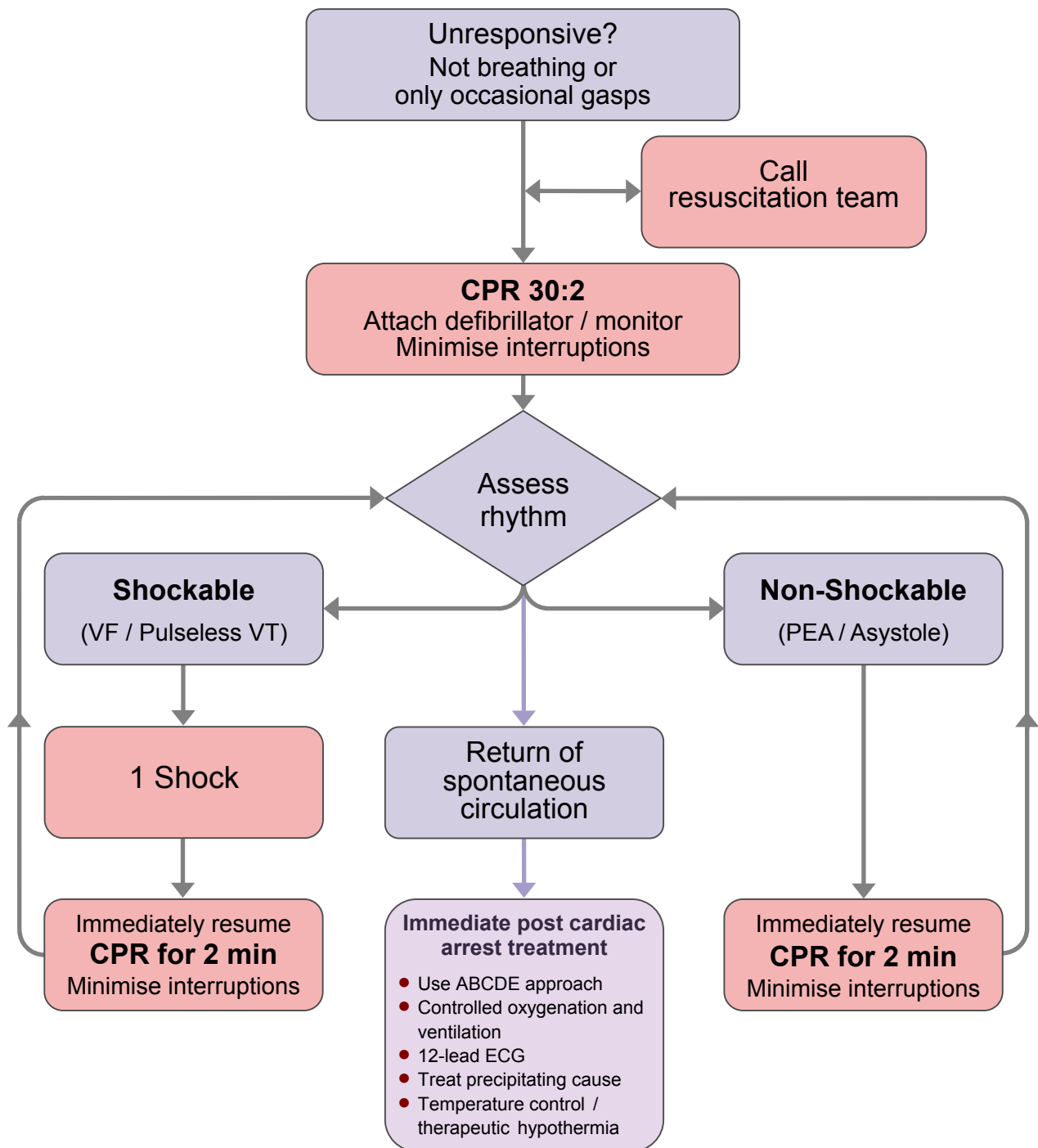


Adult Advanced Life Support



- During CPR**
- Ensure high-quality CPR: rate, depth, recoil
 - Plan actions before interrupting CPR
 - Give oxygen
 - Consider advanced airway and capnography
 - Continuous chest compressions when advanced airway in place
 - Vascular access (intravenous, intraosseous)
 - Give adrenaline every 3-5 min
 - Correct reversible causes

- Reversible Causes**
- Hypoxia
 - Hypovolaemia
 - Hypo- / hyperkalaemia / metabolic
 - Hypothermia
 - Thrombosis - coronary or pulmonary
 - Tamponade - cardiac
 - Toxins
 - Tension pneumothorax